

BID TABULATION FOR:

CONSTRUCTION OF THE PAVING AND APPURTENANCES
TO SERVE KRESSTON SECTION 1
MONTGOMERY-GRIMES COUNTIES MUNICIPAL UTILITY DISTRICT NO. 146D
MONTGOMERY COUNTY, TEXAS
APRIL 10, 2024
LJA ENGINEERING, INC.
L. MARTINEZ
APRIL 10, 2024
3096-0101P (9.2)

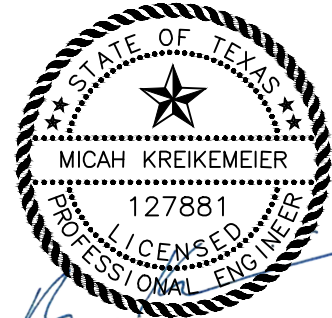
BID OPENING DATE:
BID OPENING LOCATION:
TABULATION BY:
TABULATION DATE:
LJA JOB NO.

BIDDER'S NAME	TOTAL AMOUNT BID	BID INCLUDING ALTERNATE PAVING ITEM
1) PRINCIPAL PAVING CONTRACTORS, LTD.	\$769,922.50	\$750,474.50
2) LEXTON CONSTRUCTION, LLC	\$786,675.50	\$796,399.50
3) ICON GC, LLC	\$834,000.00	\$785,380.00
4) BAY PAVING, LLC	\$838,652.00	\$799,756.00
5) DACO PAVING, INC.	\$870,000.00	\$870,000.00
6) PRECISE SERVICES, INC.	\$872,984.20	\$840,895.00
7) HASSELL CONSTRUCTION GROUP, LLC	\$874,765.25	\$827,603.85
8) CE BARKER, LTD.	\$1,058,144.30	\$975,490.30

CALENDAR DAYS 40/55



I, Micah Kreikemeier, PE, hereby certify these bid tabulations to be true and correct.



04/10/2024

BID TABULATION FOR:

BID OPENING DATE:
BID OPENING LOCATION:
TABULATION BY:
TABULATION DATE:
LJA JOB NO.

CONSTRUCTION OF THE PAVING AND APPURTENANCES
 TO SERVE KRESSTON SECTION 1
 MONTGOMERY-GRIMES COUNTIES MUNICIPAL UTILITY DISTRICT NO. 146D
 MONTGOMERY COUNTY, TEXAS
 APRIL 10, 2024
 LJA ENGINEERING, INC.
 L. MARTINEZ
 APRIL 10, 2024
 3096-0101P (9.2)

ITEM	DESCRIPTION	UNIT	QTY	1) PRINCIPAL PAVING CONTRACTORS, LTD.		2) LEXTON CONSTRUCTION, LLC		3) ICON GC, LLC	
				UNIT COST	TOTAL COST	UNIT COST	TOTAL COST	UNIT COST	TOTAL COST
DIVISION I - PAVING ITEMS									
1	6" REINFORCED CONCRETE PAVEMENT, COMPLETE IN PLACE	SY	10165	\$51.00	\$518,415.00	\$54.00	\$548,910.00	\$48.50	\$493,002.50
2	6" LIME/FLY ASH STABILIZED SUBGRADE MANIPULATION, COMPLETE IN PLACE	SY	10945	\$4.00	\$43,780.00	\$3.85	\$42,138.25	\$4.75	\$51,988.75
3	TRU-BLN LIME/FLY ASH MIXTURE FOR 6" STABILIZED SUBGRADE PREPARATION, 50 LBS/SY, AS REQUIRED BY SOIL CONDITIONS AND APPROVED BY GEOTECHNICAL ENGINEER, COMPLETE IN PLACE	TON	274	\$220.00	\$60,280.00	\$252.50	\$69,185.00	\$323.00	\$88,502.00
4	ROADWAY EXCAVATION TO BE USED FOR FILL TO FINAL GRADE TO DESIGNATED DISPOSAL SITE USING ON ROAD TRUCKS, (0 - 0.5 MILE), INCLUDING STRIPPING, STOCKPILING STRIPPINGS, PLACEMENT AND COMPACTION TO 95% STANDARD PROCTOR DENSITY, WITH MAXIMUM 8" LIFTS, AND RE-APPLICATION OF STRIPPINGS, COMPLETE IN PLACE	CY	9724	\$8.00	\$77,792.00	\$6.00	\$58,344.00	\$11.00	\$106,964.00
5	ROADWAY EXCAVATION TO BE USED FOR FILL TO FINAL GRADE WITHIN PROJECT LIMITS, INCLUDING STRIPPING, STOCKPILING STRIPPINGS, PLACEMENT AND COMPACTION TO 95% STANDARD PROCTOR DENSITY, WITH MAXIMUM 8" LIFTS, AND RE-APPLICATION OF STRIPPINGS, COMPLETE IN PLACE	CY	500	\$6.00	\$3,000.00	\$6.00	\$3,000.00	\$5.70	\$2,850.00
6	PERMANENT TRAFFIC CONTROL DEVICES, INCLUDES ALL TRAFFIC BUTTONS, PAVEMENT STRIPING, MARKERS, REFLECTIVE PAINT ON MEDIAN NOSES, STREET SIGNS, TRAFFIC SIGNS, ETC., COMPLETE IN PLACE	LS	1	\$3,500.00	\$3,500.00	\$7,257.00	\$7,257.00	\$10,450.00	\$10,450.00
7	CONTRACTOR TO PROVIDE MONTGOMERY COUNTY PAVING BOND IN THE AMOUNT OF \$262,812.17, COMPLETE IN PLACE	LS	1	\$6,000.00	\$6,000.00	\$7,207.00	\$7,207.00	\$20,639.85	\$20,639.85
8	6" REINFORCED CONCRETE CURB, COMPLETE IN PLACE	LF	2766	\$3.50	\$9,681.00	\$3.65	\$10,095.90	\$4.00	\$11,064.00
9	4" X 12" REINFORCED CONCRETE CURB, COMPLETE IN PLACE	LF	4313	\$3.50	\$15,095.50	\$3.65	\$15,742.45	\$4.50	\$19,408.50
10	INSTALL, MAINTAIN, AND REMOVE CONCRETE TRUCK WASHOUT AREA, COMPLETE IN PLACE	EA	1	\$1,875.00	\$1,875.00	\$300.00	\$300.00	\$100.00	\$100.00
11	REMOVE AND OFFSITE DISPOSAL OF EXISTING TYPE III BARRICADE, COMPLETE IN PLACE	EA	3	\$50.00	\$150.00	\$5.00	\$15.00	\$10.00	\$30.00
12	80-MM, 4"X8" ANTIQUE TERRA COTTA, HOLLAND STONE PARKWAY SERIES PAVERS BY PAVESTONE, INCLUDES BEDDING SAND, VARIETY OF COLORS, PER DETAIL, COMPLETE IN PLACE	SF	384	\$12.00	\$4,608.00	\$12.70	\$4,876.80	\$11.20	\$4,300.80
13	80-MM, 4"X8" CHARCOAL BORDER, HOLLAND STONE PARKWAY SERIES PAVERS BY PAVESTONE, INCLUDES BEDDING SAND, VARIETY OF COLORS, PER DETAIL, COMPLETE IN PLACE	SF	83	\$12.00	\$996.00	\$12.70	\$1,054.10	\$11.20	\$929.60
14	ADA WHEEL CHAIR RAMPS, INCLUDES TURNATED DOME PAVERS , COMPLETE IN PLACE	EA	2	\$1,500.00	\$3,000.00	\$1,700.00	\$3,400.00	\$1,600.00	\$3,200.00
DIVISION I - PAVING ITEMS SUBTOTAL:					\$748,172.50		\$771,525.50		\$813,430.00
DIVISION II - MISCELLANEOUS ITEMS									
1	EXTRA REINFORCED FILTER FABRIC FENCE, COMPLETE IN PLACE	LF	100	\$1.00	\$100.00	\$1.00	\$100.00	\$5.00	\$500.00
2	EXTRA CLEARING AND GRUBBING, COMPLETE IN PLACE	AC	1	\$4,000.00	\$4,000.00	\$4,000.00	\$4,000.00	\$4,000.00	\$4,000.00
3	INCREASE IN CLEARING AND GRUBBING COST TO CHIP AND HAUL OUTSIDE THIS DEVELOPMENT, COMPLETE IN PLACE	AC	1	\$6,000.00	\$6,000.00	\$6,000.00	\$6,000.00	\$6,000.00	\$6,000.00
4	4" PVC IRRIGATION SLEEVE, SCHEDULE 40, INCLUDES RISERS, PVC END CAPS, CEMENT STABILIZED SAND BACKFILL AND MARKERS, COMPLETE IN PLACE	LF	150	\$30.00	\$4,500.00	\$9.50	\$1,425.00	\$19.00	\$2,850.00

BID TABULATION FOR:

CONSTRUCTION OF THE PAVING AND APPURTENANCES
 TO SERVE KRESSTON SECTION 1
 MONTGOMERY-GRIMES COUNTIES MUNICIPAL UTILITY DISTRICT NO. 146D
 MONTGOMERY COUNTY, TEXAS
 APRIL 10, 2024
 LJA ENGINEERING, INC.
 L. MARTINEZ
 APRIL 10, 2024
 3096-0101P (9.2)

BID OPENING DATE:
BID OPENING LOCATION:
TABULATION BY:
TABULATION DATE:
LJA JOB NO.

1) PRINCIPAL PAVING CONTRACTORS, LTD. 2) LEXTON CONSTRUCTION, LLC 3) ICON GC, LLC

ITEM	DESCRIPTION	UNIT	QTY	UNIT COST	TOTAL COST	UNIT COST	TOTAL COST	UNIT COST	TOTAL COST
5	EXTRA TRAFFIC CONTROL SIGNS, (TO BE USED ONLY AS DIRECTED BY THE ENGINEER), COMPLETE IN PLACE	EA	1	\$150.00	\$150.00	\$150.00	\$150.00	\$370.00	\$370.00
6	EXTRA CEMENT STABILIZED SAND (2.0 SACKS PER TON), (TO BE USED ONLY AS DIRECTED BY THE ENGINEER), COMPLETE IN PLACE	CY	10	\$15.00	\$150.00	\$15.00	\$150.00	\$50.00	\$500.00
7	EXTRA ORANGE CONSTRUCTION FENCE, (TO BE USED ONLY AS DIRECTED BY THE ENGINEER), COMPLETE IN PLACE	LF	100	\$1.00	\$100.00	\$1.00	\$100.00	\$3.50	\$350.00
8	8" PVC IRRIGATION SLEEVE, SCHEDULE 40, INCLUDES RISERS, PVC END CAPS, CEMENT STABILIZED SAND BACKFILL AND MARKERS, COMPLETE IN PLACE	LF	150	\$45.00	\$6,750.00	\$21.50	\$3,225.00	\$40.00	\$6,000.00
DIVISION II - MISCELLANEOUS ITEMS SUBTOTAL:					\$21,750.00		\$15,150.00		\$20,570.00
<u>ALTERNATE PAVING ITEM</u>									
1	ROADWAY EXCAVATION TO BE USED FOR FILL TO FINAL GRADE TO DESIGNATED DISPOSAL SITE USING OFF ROAD TRUCKS, (0 - 0.5 MILE), INCLUDING STRIPPING, STOCKPILING STRIPPINGS, PLACEMENT AND COMPACTION TO 95% STANDARD PROCTOR DENSITY, WITH MAXIMUM 8" LIFTS, AND RE-APPLICATION OF STRIPPINGS, TO BE USED IN LIEU OF DIVISION I - PAVING ITEM NO. 4, COMPLETE IN PLACE	CY	9724	\$6.00	\$58,344.00	\$7.00	\$68,068.00	\$6.00	\$58,344.00
ALTERNATE PAVING ITEM SUBTOTAL:					\$58,344.00		\$68,068.00		\$58,344.00
<u>BIDDING SUMMARY</u>									
SUBTOTAL DIVISION I - PAVING ITEMS					\$748,172.50		\$771,525.50		\$813,430.00
SUBTOTAL DIVISION II - MISCELLANEOUS ITEMS					\$21,750.00		\$15,150.00		\$20,570.00
TOTAL AMOUNT BASE BID					\$769,922.50		\$786,675.50		\$834,000.00
<u>ALTERNATE PAVING ITEM</u>									
TOTAL AMOUNT BASE BID					\$769,922.50		\$786,675.50		\$834,000.00
DEDUCT DIVISION I - PAVING ITEMS ITEM NO.4					-\$77,792.00		-\$58,344.00		-\$106,964.00
SUBTOTAL ALTERNATE PAVING ITEM					\$58,344.00		\$68,068.00		\$58,344.00
TOTAL AMOUNT INCLUDING ALTERNATE PAVING ITEM					\$750,474.50		\$796,399.50		\$785,380.00

BID TABULATION FOR:

CONSTRUCTION OF THE PAVING AND APPURTENANCES
 TO SERVE KRESSTON SECTION 1
 MONTGOMERY-GRIMES COUNTIES MUNICIPAL UTILITY DISTRICT NO. 146D
 MONTGOMERY COUNTY, TEXAS
 APRIL 10, 2024
 LJA ENGINEERING, INC.
 L. MARTINEZ
 APRIL 10, 2024
 3096-0101P (9.2)

BID OPENING DATE:
BID OPENING LOCATION:
TABULATION BY:
TABULATION DATE:
LJA JOB NO.

ITEM	DESCRIPTION	UNIT	QTY	4) BAY PAVING, LLC		5) DACO PAVING, INC.		6) PRECISE SERVICES, INC.	
				UNIT COST	TOTAL COST	UNIT COST	TOTAL COST	UNIT COST	TOTAL COST
DIVISION I - PAVING ITEMS									
1	6" REINFORCED CONCRETE PAVEMENT, COMPLETE IN PLACE	SY	10165	\$50.00	\$508,250.00	\$52.50	\$533,662.50	\$51.55	\$524,005.75
2	6" LIME/FLY ASH STABILIZED SUBGRADE MANIPULATION, COMPLETE IN PLACE	SY	10945	\$3.15	\$34,476.75	\$3.40	\$37,213.00	\$4.95	\$54,177.75
3	TRU-BLN LIME/FLY ASH MIXTURE FOR 6" STABILIZED SUBGRADE PREPARATION, 50 LBS/SY, AS REQUIRED BY SOIL CONDITIONS AND APPROVED BY GEOTECHNICAL ENGINEER, COMPLETE IN PLACE	TON	274	\$290.00	\$79,460.00	\$240.00	\$65,760.00	\$235.00	\$64,390.00
4	ROADWAY EXCAVATION TO BE USED FOR FILL TO FINAL GRADE TO DESIGNATED DISPOSAL SITE USING ON ROAD TRUCKS, (0 - 0.5 MILE), INCLUDING STRIPPING, STOCKPILING STRIPPINGS, PLACEMENT AND COMPACTION TO 95% STANDARD PROCTOR DENSITY, WITH MAXIMUM 8" LIFTS, AND RE-APPLICATION OF STRIPPINGS, COMPLETE IN PLACE	CY	9724	\$10.00	\$97,240.00	\$9.00	\$87,516.00	\$11.00	\$106,964.00
5	ROADWAY EXCAVATION TO BE USED FOR FILL TO FINAL GRADE WITHIN PROJECT LIMITS, INCLUDING STRIPPING, STOCKPILING STRIPPINGS, PLACEMENT AND COMPACTION TO 95% STANDARD PROCTOR DENSITY, WITH MAXIMUM 8" LIFTS, AND RE-APPLICATION OF STRIPPINGS, COMPLETE IN PLACE	CY	500	\$9.25	\$4,625.00	\$7.00	\$3,500.00	\$7.70	\$3,850.00
6	PERMANENT TRAFFIC CONTROL DEVICES, INCLUDES ALL TRAFFIC BUTTONS, PAVEMENT STRIPING, MARKERS, REFLECTIVE PAINT ON MEDIAN NOSES, STREET SIGNS, TRAFFIC SIGNS, ETC., COMPLETE IN PLACE	LS	1	\$19,200.00	\$19,200.00	\$45,199.50	\$45,199.50	\$37,500.00	\$37,500.00
7	CONTRACTOR TO PROVIDE MONTGOMERY COUNTY PAVING BOND IN THE AMOUNT OF \$262,812.17, COMPLETE IN PLACE	LS	1	\$35,000.00	\$35,000.00	\$9,900.00	\$9,900.00	\$6,650.00	\$6,650.00
8	6" REINFORCED CONCRETE CURB, COMPLETE IN PLACE	LF	2766	\$3.75	\$10,372.50	\$4.50	\$12,447.00	\$4.30	\$11,893.80
9	4" X 12" REINFORCED CONCRETE CURB, COMPLETE IN PLACE	LF	4313	\$3.75	\$16,173.75	\$4.50	\$19,408.50	\$4.30	\$18,545.90
10	INSTALL, MAINTAIN, AND REMOVE CONCRETE TRUCK WASHOUT AREA, COMPLETE IN PLACE	EA	1	\$2,000.00	\$2,000.00	\$1,200.00	\$1,200.00	\$500.00	\$500.00
11	REMOVE AND OFFSITE DISPOSAL OF EXISTING TYPE III BARRICADE, COMPLETE IN PLACE	EA	3	\$50.00	\$150.00	\$1.00	\$3.00	\$100.00	\$300.00
12	80-MM, 4"x8" ANTIQUE TERRA COTTA, HOLLAND STONE PARKWAY SERIES PAVERS BY PAVESTONE, INCLUDES BEDDING SAND, VARIETY OF COLORS, PER DETAIL, COMPLETE IN PLACE	SF	384	\$12.00	\$4,608.00	\$21.50	\$8,256.00	\$21.00	\$8,064.00
13	80-MM, 4"x8" CHARCOAL BORDER, HOLLAND STONE PARKWAY SERIES PAVERS BY PAVESTONE, INCLUDES BEDDING SAND, VARIETY OF COLORS, PER DETAIL, COMPLETE IN PLACE	SF	83	\$12.00	\$996.00	\$21.50	\$1,784.50	\$21.00	\$1,743.00
14	ADA WHEEL CHAIR RAMPS, INCLUDES TURNATED DOME PAVERS , COMPLETE IN PLACE	EA	2	\$1,600.00	\$3,200.00	\$2,000.00	\$4,000.00	\$2,200.00	\$4,400.00
DIVISION I - PAVING ITEMS SUBTOTAL:					\$815,752.00		\$829,850.00		\$842,984.20
DIVISION II - MISCELLANEOUS ITEMS									
1	EXTRA REINFORCED FILTER FABRIC FENCE, COMPLETE IN PLACE	LF	100	\$1.00	\$100.00	\$3.00	\$300.00	\$1.00	\$100.00
2	EXTRA CLEARING AND GRUBBING, COMPLETE IN PLACE	AC	1	\$5,000.00	\$5,000.00	\$6,000.00	\$6,000.00	\$4,000.00	\$4,000.00
3	INCREASE IN CLEARING AND GRUBBING COST TO CHIP AND HAUL OUTSIDE THIS DEVELOPMENT, COMPLETE IN PLACE	AC	1	\$6,000.00	\$6,000.00	\$6,000.00	\$6,000.00	\$6,000.00	\$6,000.00
4	4" PVC IRRIGATION SLEEVE, SCHEDULE 40, INCLUDES RISERS, PVC END CAPS, CEMENT STABILIZED SAND BACKFILL AND MARKERS, COMPLETE IN PLACE	LF	150	\$30.00	\$4,500.00	\$67.00	\$10,050.00	\$47.50	\$7,125.00

BID TABULATION FOR:

CONSTRUCTION OF THE PAVING AND APPURTENANCES
 TO SERVE KRESSTON SECTION 1
 MONTGOMERY-GRIMES COUNTIES MUNICIPAL UTILITY DISTRICT NO. 146D
 MONTGOMERY COUNTY, TEXAS
 APRIL 10, 2024
 LJA ENGINEERING, INC.
 L. MARTINEZ
 APRIL 10, 2024
 3096-0101P (9.2)

BID OPENING DATE:
BID OPENING LOCATION:
TABULATION BY:
TABULATION DATE:
LJA JOB NO.

ITEM	DESCRIPTION	UNIT	QTY	4) BAY PAVING, LLC		5) DACO PAVING, INC.		6) PRECISE SERVICES, INC.	
				UNIT COST	TOTAL COST	UNIT COST	TOTAL COST	UNIT COST	TOTAL COST
5	EXTRA TRAFFIC CONTROL SIGNS, (TO BE USED ONLY AS DIRECTED BY THE ENGINEER), COMPLETE IN PLACE	EA	1	\$150.00	\$150.00	\$1,350.00	\$1,350.00	\$150.00	\$150.00
6	EXTRA CEMENT STABILIZED SAND (2.0 SACKS PER TON), (TO BE USED ONLY AS DIRECTED BY THE ENGINEER), COMPLETE IN PLACE	CY	10	\$30.00	\$300.00	\$50.00	\$500.00	\$15.00	\$150.00
7	EXTRA ORANGE CONSTRUCTION FENCE, (TO BE USED ONLY AS DIRECTED BY THE ENGINEER), COMPLETE IN PLACE	LF	100	\$1.00	\$100.00	\$2.00	\$200.00	\$1.00	\$100.00
8	8" PVC IRRIGATION SLEEVE, SCHEDULE 40, INCLUDES RISERS, PVC END CAPS, CEMENT STABILIZED SAND BACKFILL AND MARKERS, COMPLETE IN PLACE	LF	150	\$45.00	\$6,750.00	\$105.00	\$15,750.00	\$82.50	\$12,375.00
DIVISION II - MISCELLANEOUS ITEMS SUBTOTAL:					\$22,900.00		\$40,150.00		\$30,000.00
<u>ALTERNATE PAVING ITEM</u>									
1	ROADWAY EXCAVATION TO BE USED FOR FILL TO FINAL GRADE TO DESIGNATED DISPOSAL SITE USING OFF ROAD TRUCKS, (0 - 0.5 MILE), INCLUDING STRIPPING, STOCKPILING STRIPPINGS, PLACEMENT AND COMPACTION TO 95% STANDARD PROCTOR DENSITY, WITH MAXIMUM 8" LIFTS, AND RE-APPLICATION OF STRIPPINGS, TO BE USED IN LIEU OF DIVISION I - PAVING ITEM NO. 4, COMPLETE IN PLACE	CY	9724	\$6.00	\$58,344.00	\$9.00	\$87,516.00	\$7.70	\$74,874.80
ALTERNATE PAVING ITEM SUBTOTAL:					\$58,344.00		\$87,516.00		\$74,874.80
<u>BIDDING SUMMARY</u>									
SUBTOTAL DIVISION I - PAVING ITEMS					\$815,752.00		\$829,850.00		\$842,984.20
SUBTOTAL DIVISION II - MISCELLANEOUS ITEMS					\$22,900.00		\$40,150.00		\$30,000.00
TOTAL AMOUNT BASE BID					\$838,652.00		\$870,000.00		\$872,984.20
<u>ALTERNATE PAVING ITEM</u>									
TOTAL AMOUNT BASE BID					\$838,652.00		\$870,000.00		\$872,984.20
DEDUCT DIVISION I - PAVING ITEMS ITEM NO.4					-\$97,240.00		-\$87,516.00		-\$106,964.00
SUBTOTAL ALTERNATE PAVING ITEM					\$58,344.00		\$87,516.00		\$74,874.80
TOTAL AMOUNT INCLUDING ALTERNATE PAVING ITEM					\$799,756.00		\$870,000.00		\$840,895.00

BID TABULATION FOR:

CONSTRUCTION OF THE PAVING AND APPURTENANCES
 TO SERVE KRESSTON SECTION 1
 MONTGOMERY-GRIMES COUNTIES MUNICIPAL UTILITY DISTRICT NO. 146D
 MONTGOMERY COUNTY, TEXAS
 APRIL 10, 2024
 LJA ENGINEERING, INC.
 L. MARTINEZ
 APRIL 10, 2024
 3096-0101P (9.2)

BID OPENING DATE:
BID OPENING LOCATION:
TABULATION BY:
TABULATION DATE:
LJA JOB NO.

7) HASSELL CONSTRUCTION GROUP, LLC

8) CE BARKER, LTD.

ITEM	DESCRIPTION	UNIT	QTY	UNIT COST	TOTAL COST	UNIT COST	TOTAL COST
<i>DIVISION I - PAVING ITEMS</i>							
1	6" REINFORCED CONCRETE PAVEMENT, COMPLETE IN PLACE	SY	10165	\$49.55	\$503,675.75	\$56.00	\$569,240.00
2	6" LIME/FLY ASH STABILIZED SUBGRADE MANIPULATION, COMPLETE IN PLACE	SY	10945	\$4.80	\$52,536.00	\$10.00	\$109,450.00
3	TRU-BLN LIME/FLY ASH MIXTURE FOR 6" STABILIZED SUBGRADE PREPARATION, 50 LBS/SY, AS REQUIRED BY SOIL CONDITIONS AND APPROVED BY GEOTECHNICAL ENGINEER, COMPLETE IN PLACE	TON	274	\$309.00	\$84,666.00	\$380.00	\$104,120.00
4	ROADWAY EXCAVATION TO BE USED FOR FILL TO FINAL GRADE TO DESIGNATED DISPOSAL SITE USING ON ROAD TRUCKS, (0 - 0.5 MILE), INCLUDING STRIPPING, STOCKPILING STRIPPINGS, PLACEMENT AND COMPACTION TO 95% STANDARD PROCTOR DENSITY, WITH MAXIMUM 8" LIFTS, AND RE-APPLICATION OF STRIPPINGS, COMPLETE IN PLACE	CY	9724	\$11.65	\$113,284.60	\$18.50	\$179,894.00
5	ROADWAY EXCAVATION TO BE USED FOR FILL TO FINAL GRADE WITHIN PROJECT LIMITS, INCLUDING STRIPPING, STOCKPILING STRIPPINGS, PLACEMENT AND COMPACTION TO 95% STANDARD PROCTOR DENSITY, WITH MAXIMUM 8" LIFTS, AND RE-APPLICATION OF STRIPPINGS, COMPLETE IN PLACE	CY	500	\$4.70	\$2,350.00	\$10.00	\$5,000.00
6	PERMANENT TRAFFIC CONTROL DEVICES, INCLUDES ALL TRAFFIC BUTTONS, PAVEMENT STRIPING, MARKERS, REFLECTIVE PAINT ON MEDIAN NOSES, STREET SIGNS, TRAFFIC SIGNS, ETC., COMPLETE IN PLACE	LS	1	\$38,000.00	\$38,000.00	\$20,000.00	\$20,000.00
7	CONTRACTOR TO PROVIDE MONTGOMERY COUNTY PAVING BOND IN THE AMOUNT OF \$262,812.17, COMPLETE IN PLACE	LS	1	\$6,155.00	\$6,155.00	\$9,000.00	\$9,000.00
8	6" REINFORCED CONCRETE CURB, COMPLETE IN PLACE	LF	2766	\$4.20	\$11,617.20	\$3.20	\$8,851.20
9	4" X 12" REINFORCED CONCRETE CURB, COMPLETE IN PLACE	LF	4313	\$4.20	\$18,114.60	\$3.20	\$13,801.60
10	INSTALL, MAINTAIN, AND REMOVE CONCRETE TRUCK WASHOUT AREA, COMPLETE IN PLACE	EA	1	\$1,855.00	\$1,855.00	\$300.00	\$300.00
11	REMOVE AND OFFSITE DISPOSAL OF EXISTING TYPE III BARRICADE, COMPLETE IN PLACE	EA	3	\$200.00	\$600.00	\$300.00	\$900.00
12	80-MM, 4"x8" ANTIQUE TERRA COTTA, HOLLAND STONE PARKWAY SERIES PAVERS BY PAVESTONE, INCLUDES BEDDING SAND, VARIETY OF COLORS, PER DETAIL, COMPLETE IN PLACE	SF	384	\$13.80	\$5,299.20	\$12.50	\$4,800.00
13	80-MM, 4"x8" CHARCOAL BORDER, HOLLAND STONE PARKWAY SERIES PAVERS BY PAVESTONE, INCLUDES BEDDING SAND, VARIETY OF COLORS, PER DETAIL, COMPLETE IN PLACE	SF	83	\$13.80	\$1,145.40	\$12.50	\$1,037.50
14	ADA WHEEL CHAIR RAMPS, INCLUDES TURNATED DOME PAVERS , COMPLETE IN PLACE	EA	2	\$2,030.00	\$4,060.00	\$1,400.00	\$2,800.00
DIVISION I - PAVING ITEMS SUBTOTAL:					\$843,358.75		\$1,029,194.30

DIVISION II - MISCELLANEOUS ITEMS

1	EXTRA REINFORCED FILTER FABRIC FENCE, COMPLETE IN PLACE	LF	100	\$3.25	\$325.00	\$5.00	\$500.00
2	EXTRA CLEARING AND GRUBBING, COMPLETE IN PLACE	AC	1	\$6,500.00	\$6,500.00	\$8,500.00	\$8,500.00
3	INCREASE IN CLEARING AND GRUBBING COST TO CHIP AND HAUL OUTSIDE THIS DEVELOPMENT, COMPLETE IN PLACE	AC	1	\$6,000.00	\$6,000.00	\$6,000.00	\$6,000.00
4	4" PVC IRRIGATION SLEEVE, SCHEDULE 40, INCLUDES RISERS, PVC END CAPS, CEMENT STABILIZED SAND BACKFILL AND MARKERS, COMPLETE IN PLACE	LF	150	\$43.80	\$6,570.00	\$30.00	\$4,500.00

